

The Andra III



E
G
G
L
E
S
T
O
N

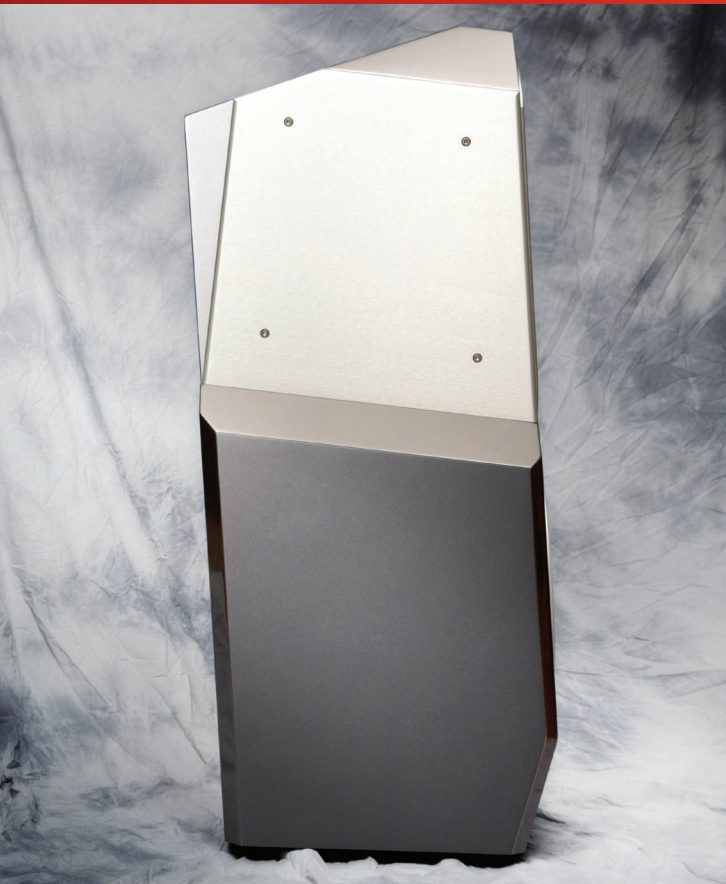
W
O
R
K
S

Few names in audio are as iconic as the EgglestonWorks Andra. The original Andra met with immediate critical acclaim winning Stereophile's prestigious Speaker of the Year. The EgglestonWorks design team continues their tradition for excellence and quality with the

latest in the evolution of the Andra line with the Andra III. The external changes are obvious and include a high-gloss paint finish with the addition of aluminum side panels and baffle plates. Internally, the Andra III employs a completely redesigned network, bass porting for pressure release,

carbon-fiber coned midrange drivers, and several other proprietary advances.

After 4 years of careful analysis and testing, the EGG.WORKS team is proud to introduce a speaker worthy of such lofty lineage: **The ANDRA III**. The latest EGG.WORKS creation.



Specifications

- Frequency response is from -3dB @ 18 Hz to well beyond 24,000Hz
- Efficiency is 88dB
- Impedance is 8 Ohms, nominal. 6 Ohms average
- Tweeter: One 1" cloth dome
- Mid-range: Two 6" Carbon-Fiber, double magnet drivers.
- Bass: Dual 12" woofers, compound loaded with a single port.
- Footprint is 15" x 18", height is 44"
- 220 pounds per loudspeaker.

Deluxe Sound



EGG.WORKS

540 Cumberland
Memphis, TN 38112
901.525.1100
www.egglestonworks.com